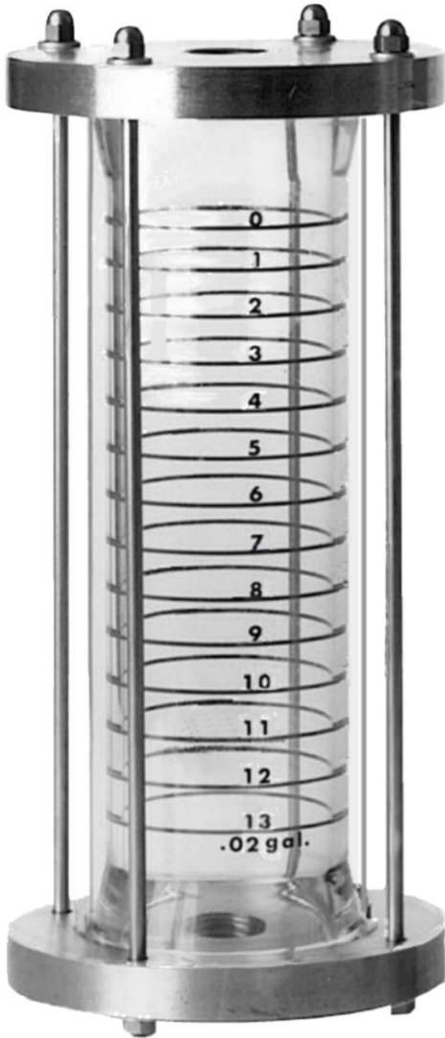


CALIBRATION COLUMNS SERIES 85100



USE INDICO BRAND CALIBRATION COLUMNS TO ACCURATELY MEASURE AND/OR CONTINUOUSLY MONITOR THE OUTPUT OF YOUR METERING PUMPS.

INDICO BRAND COLUMNS ARE ACCURATE TO PLUS OR MINUS 1% AND SIZED TO PROVIDE A FULL ONE MINUTE DRAWDOWN.

EACH COLUMN IS INDIVIDUALLY CALIBRATED, COMPUTER GRADUATED AND TESTED TO ENSURE ACCURACY

FULLY CIRCUMSCRIBED GRADUATIONS HELP MINIMIZE PARALAX

COMPATIBLE WITH A WIDE RANGE OF CHEMICALS

CAPACITIES UP TO 28 LITER OR 7.5 GALLON

DUAL GRADUATIONS OPTIONAL

ALL GLASS COLUMNS HAVE TEFLON ENCAPSULATED SILICON RUBBER SEALS

GLASS COLUMNS CAN BE DISASSEMBLED FOR CLEANING

GRADUATION TYPES:

GALLONS
MILLILITERS
LITERS
OUNCES
CC's
INCHES
DUAL

SIZES:

20 ML TO 28 LITER
.005 GALLON TO
7.5 GALLON

CONNECTION TYPES:

THREADED 1/2 TO 3"
CUSTOM

END CAP MATERIALS:

303 - 304 - 316 ST ST
HASTELOY - ALLOY 20
TEFLON - PVC

INDICO BRAND CALIBRATION COLUMNS ARE ALSO AVAILABLE IN PVC, ACRYLIC AND FEP MATERIALS. SEE INDIVIDUAL PRODUCT SHEETS FOR DETAILS.



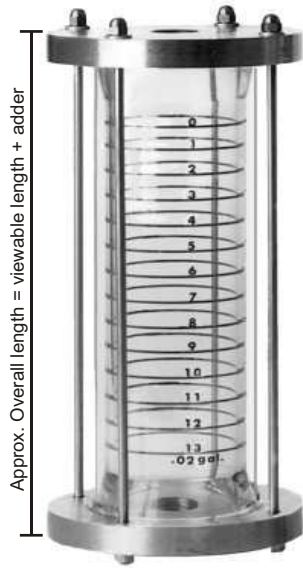
Valcom

Since 1966
INDICO[®]
BRAND

Valcom div. of TRI 81 Diamond St. Walpole, MA 02081

PH. 508-668-5583 FAX 508-668-5203 WEB ADDRESS tooling-research.com

To order call 800-394-5583



Custom configurations available

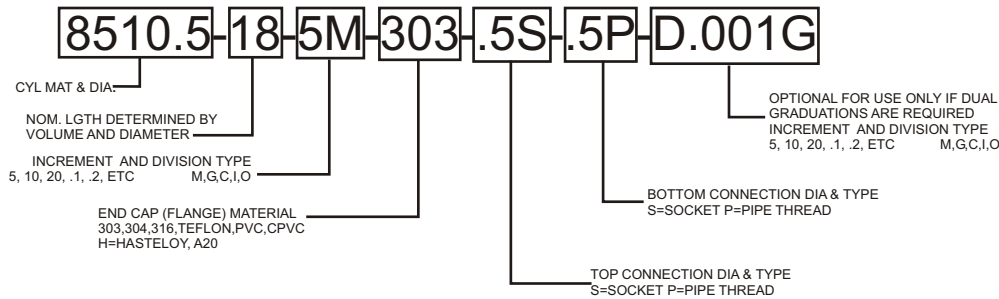
To calculate length of a column use this example:

For a column with a 5 gallon capacity and .05 gallon graduations you have two choices. In the chart both a 4" and a 6" dia. can be graduated in .05 gallon increments. Select 6" which has a 1.47 gallon per foot capacity. Divide 5 gallons by 1.47 gallons and multiply the dividend by 12 to get overall viewable inches. This is the area of the column that is used for the actual calibration. This is also the number that is entered in the product part number in the area marked "viewable length in inches".

$$(5/1.47) \times 12 = 40.8 \text{ inches} + \text{adder (4.5)} = 45.3 \text{ overall inches}$$

Dia	Adder	Std. Conn.	gal/ft cap	ml/ft cap	oz/ft cap	Standard grads
1/2"	3"	1/2" FNPT	0.01	39	1.3	.0005gal or 2ml 1/16 OZ
1"	3.5"	1/2" FNPT	0.04	154	5.12	.005gal or 20ml 1/8 OZ
2"	4"	1/2" FNPT	0.16	618	20.5	.01gal or 50ml 1/2 OZ
3"	4"	1" FNPT	0.37	1390	47.4	.01gal or 50ml 1/8 OZ
4"	4"	1" FNPT	0.65	2470	83	.05gal or 100ml 1 OZ
6"	4.5"	1" FNPT	1.47	5560	188	.05gal or 200ml 4 OZ

Example below specifies a 1/2' glass column 18 inches long graduated in 5 milliliter increments with 303 stainless steel end caps and having a 1/2 inch socket connection on the top a 1/2 inch threaded connection on the bottom and optional secondary (dual) .001 gallon increments.



MODEL 85100 SAMPLE SPECIFICATION

There shall be provided an Indico Model 85100 Calibration Column made of Borosilicate glass cylinder materials, with fully circumscribed permanent markings and black or white numerals of approximately 1/4" in height. The glass cylinder shall be protected by a clear acrylic outer cylinder, and shall be capped at each end by a compatible end cap material in accordance with the chemical or fluid being measured. Said end caps shall have appropriately sized FNPT or socket connections on both top and bottom. Graduation markings shall be in Milliliters, Gallons, Cubic Centimeters Inches or Ounces as determined by installation and pump requirements.

INDICO MODEL 85100 CALIBRATION COLUMNS ARE MANUFACTURED BY VALCOM DIVISION OF TRI, WALPOLE MA 02081

800-394-5583

END CAP/FLANGE MATL. AVAILABLE

- 303, 304 OR 316 STAINLESS STEEL
- TEFLON OR FEP TEFLON IS A REG TRADE MARK OF THE DUPONT CORPORATION
- PVC (POLYVINYL CHLORIDE)
- CPVC (CHLORINATED POLYVINYL CHLORIDE)
- HASTELOY, A20, CUSTOM

HOW TO ORDER

- Step 1:** Determine volume required by dividing your pump output per hour by 60
- Step 2:** Specify whether readout should be in gals. ml, inches, cc's or ounces.
- Step 3:** Specify end cap material according to chemical or process fluid being pumped.
- Step 4:** Specify top and bottom connection type.
- Step 5:** Specify divisions required (IE .01 gal etc).

**INDICO MODEL 85100
GLASS CALIBRATION COLUMNS**

81 Diamond St. Walpole, MA 02081
PH 508-668-5583 FAX 508-668-5203