

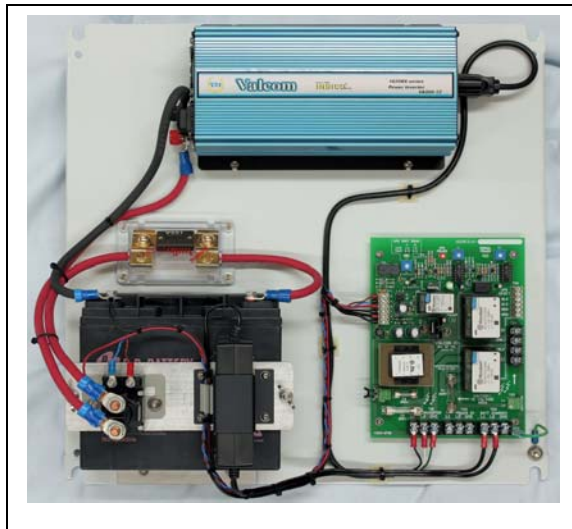


Introducing the new 1620ESv2 Series

Now more compact, more features and smaller price

New Electronic Failsafe Controller, with many standard features:

- Timed or Instant Power Transfer Selection
- Auto or Timed UPS Shut Down Selection
- Actuator Supplied Power Status LED
- Controller Power Indicator LED.
- UPS Shut Down Indicator LED
- Remote Test Switch Incorporated
- Heater / Fan Power Ready



- Normal Power Fuse Protection
- Emergency Power Fuse Protection
- UPS Emergency Power Reset Ready
- Modulating or NON-Modulating Valves.
- Heavy Duty Transformer Inverter
- Automatic Switch-Mode Battery Charger.
- Maintenance Free Operation Battery.

We offer the most reliable Failsafe in the industry, powerful, small size and yet the most economical system on the market. Choose from different models that supply currents from 0.1 to 20 running amps.

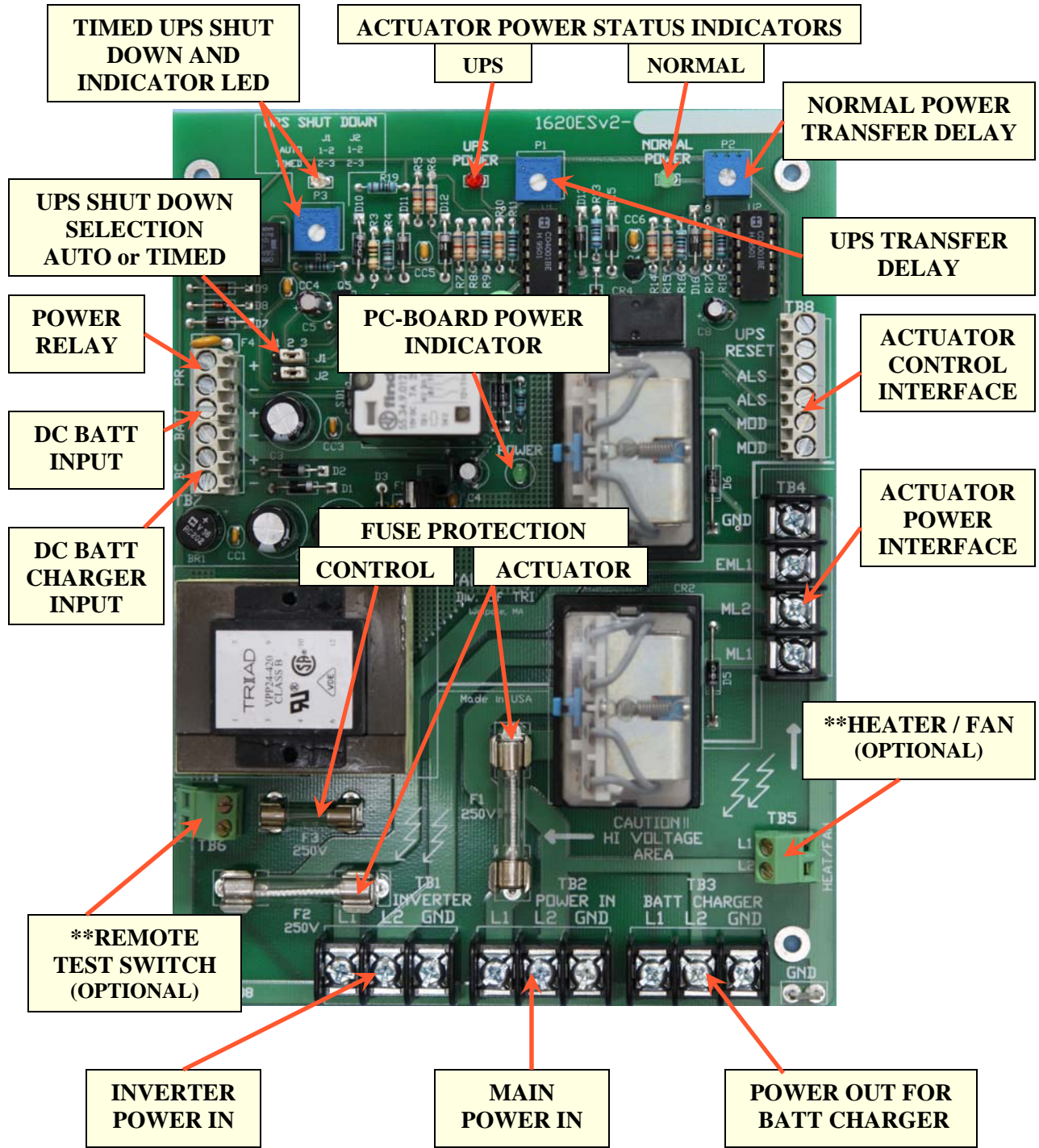
Our Failsafes are offered in all types of NEMA enclosures, working voltages are 120 or 240Vac.

Call Valcom for full line, price and information.

Valcom div. of TRI 81 Diamond St. Walpole, MA 02081
PH 508-668-5583 FAX 508-668-5203 Web address: <http://www.tooling-research.com>
To order call 800-394-5583

1620ESv2 SERIES ELECTRONIC FAILSAFE

1620ESv2 SERIES STANDARD FEATURES AND A NEW LOW PRICE



**** Terminal Block is installed on PC-Board, FAN, HEATER or SWITCH may be ordered as an option from Valcom.**