

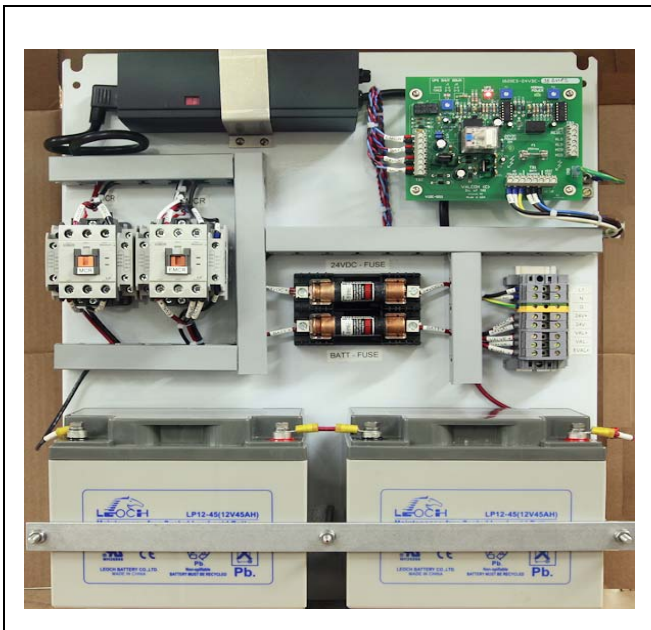
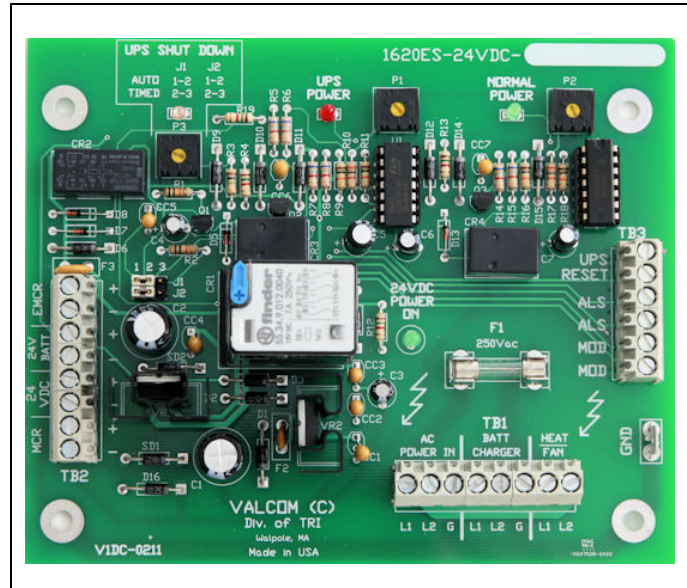


## Introducing the new 1620ES-24VDC Series

The low voltage, fully automated Failsafe

New Electronic Failsafe Controller, with many standard features:

- Timed or Instant Power Transfer Selection
- Auto or Timed UPS Shut Down Selection
- Actuator Supplied Power Status LED
- Controller Power Indicator LED
- Heater / Fan Power Ready
- Normal Power Fuse Protection



- Emergency Power Fuse Protection
- UPS Emergency Power Reset Ready
- Modulating or NON-Modulating Valves
- Automatic Switch-Mode Battery Charger
- Maintenance Free Operation Battery

We offer the most reliable Failsafe in the industry, powerful, small size and yet the most economical system on the market. Choose from different models that supply currents from 0.1 to 200 running amps.

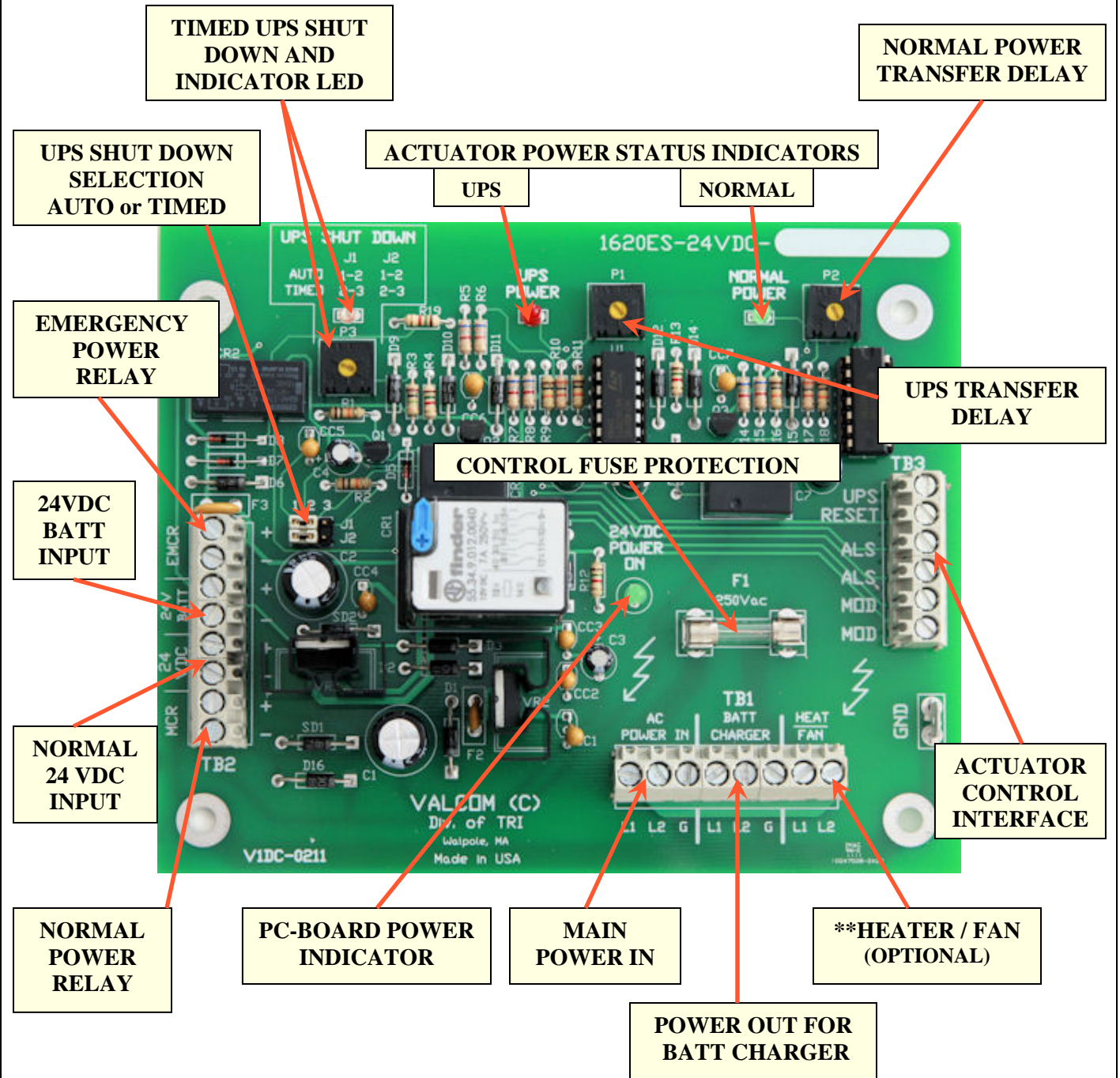
Our Failsafes are offered in all types of NEMA enclosures, working voltages are 24Vdc, 120Vac or 240Vac.

**Call Valcom for full line, price and information.**

**Valcom div. of TRI 81 Diamond St. Walpole, MA 02081**  
PH 508-668-5583 FAX 508-668-5203 Web address: <http://www.tooling-research.com>  
**To order call 800-394-5583**

1620ES-24VDC SERIES ELECTRONIC FAILSAFE

## 1620ES-24VDC SERIES STANDARD FEATURES AND LOW PRICE



**\*\* Terminal Block is installed on PC-Board. FAN, HEATER or SWITCH may be ordered as an option from Valcom.**